

Insulin Injection Guide For Dogs and Cats

Healthy Tracks™
for Pets 


PREPARING THE SYRINGE

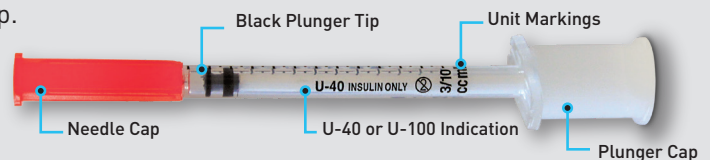
1) Always read and follow the instructions that accompany the insulin prescribed by your veterinarian. Healthy Tracks for Pets Syringes are intended for use only with dogs and cats. **NOT FOR HUMAN USE.**


2) Note the instructions for the insulin, many types of insulin require the insulin vial to be rolled to mix the contents before each use.

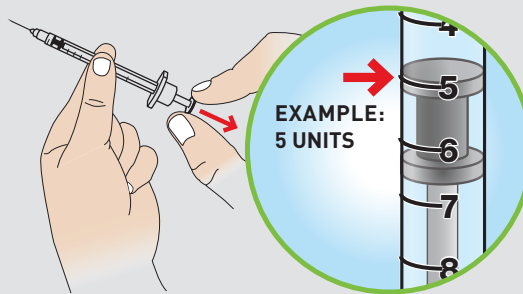
IMPORTANT: Make sure you are using the proper insulin syringe for the type of prescribed insulin: U-40 and U-100 syringes are not interchangeable.

TIP: It is important that the syringe and insulin vial stays sterile. You should always wash your hands before handling the syringe and insulin vial.

 Expose plunger by removing large white plunger cap. Do not remove cap until ready to use syringe. Next, expose the needle by twisting to remove the needle cap, being careful to pull it off straight so as not to bend the needle.




 Fill the syringe with air by pulling back on the plunger until the black plunger tip is aligned with the line on the barrel showing the dose your veterinarian prescribed. **TIP:** Be precise when measuring and ensure the dose is correct with the veterinarian's prescription.





Measuring the dose

Align the edge of the black plunger tip with the line on the barrel showing the dose your veterinarian prescribed.

This example shows a dose of 5 units.

 Push the syringe needle through the rubber stopper at the top of the insulin vial. Then, push the plunger all the way down to inject the air into the vial. Keep the needle in the vial.

 Turn the vial and syringe upside down. Then, fill the syringe with insulin by pulling back on the plunger until the black plunger tip is aligned with the line on the barrel showing the dose your veterinarian prescribed.

 Remove the syringe needle from the insulin vial. To keep the needle sterile, do not let the needle touch anything. You are now ready to administer the injection of insulin to your pet.

TIP 1: Ensure the needle tip is covered with the insulin to prevent air from getting inside the syringe.

TIP 2: If there are air bubbles inside the syringe: Gently tap on the side of the barrel of the syringe, inject the bubbles back into the vial, and pull the plunger back to the prescribed dose.

IMPORTANT: Check the drug information sheet or contact the drug manufacturer for recommended storage and use of your medicine. To avoid clogging and/or contamination of the syringe needle, please **DO NOT** store medicine inside the syringe.

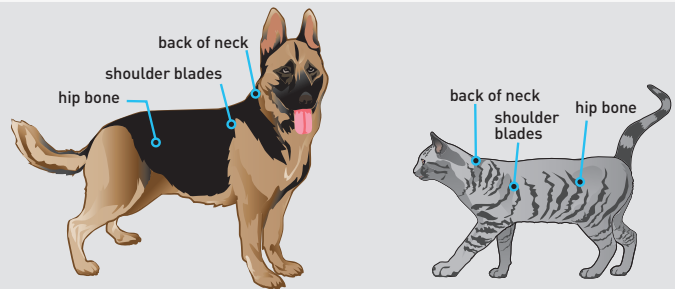
ADMINISTERING THE INJECTION

IMPORTANT: Follow all recommendations and instructions provided by your Veterinarian.

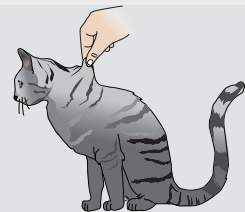


There are several areas on dogs and cats where you can inject the insulin. Loose areas of the skin are the best, the most common placement is near the base of the neck and shoulder blades.

TIP: Be sure to alternate the location each time you give an injection to avoid soreness. Follow the recommendations provided by your veterinarian.

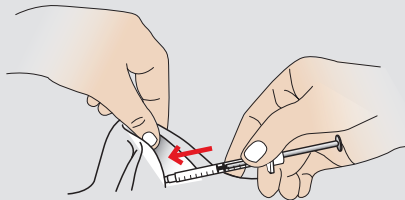


Gently pinch and pull on an area of your pet's loose skin to form a small fold.

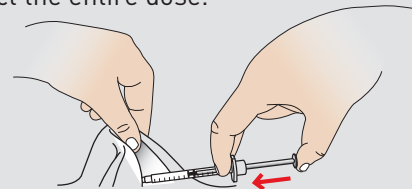


Gently insert the needle through the skin into the center area of the pulled-up skin.

TIP: For safety and to keep from losing any of the insulin dose, do not place finger on the plunger until the needle is in the skin.



Slightly draw back the plunger, if you see that blood gets into the syringe, you are in a blood vessel, pull the needle out and try another location. If you do not see blood, gently push the plunger all the way in to inject the entire dose.



Gently pull the needle out of the skin. If you are unsure if your pet received the full dose of insulin, do not inject more. Wait until the next scheduled injection.

Call your veterinarian with any questions or concerns.

TIP 1: Run your hand over the injection site to feel for moisture.

TIP 2: Write down the date and time of each injection.



Properly dispose of the syringe in a sharps container.

Always follow state and local regulations when disposing of used needles.

TIP: USE THE SYRINGE ONLY ONCE. Use a new syringe each and every time. Never reuse syringes.

Healthy Tracks for Pets Syringes are intended for use only with dogs and cats. NOT FOR HUMAN USE.

For more information, visit our website at [Healthy-Tracks.com](https://www.healthytracks.com)

The information provided in this educational piece has been reviewed by Dr. Jessica H. Slade, DVM

References:

How To Administer Insulin To Your Dog. Downloaded 8/20/2020. <https://www.aaha.org/globalassets/02-guidelines/diabetes/diabetes-insulin-dog>

How To Administer Insulin To Your Cat. Downloaded 8/20/2020. https://www.aaha.org/globalassets/02-guidelines/diabetes/diabetes_insulin_cat_final.pdf

Insulin administration. Videos - How to administer insulin to your dog. How to administer insulin to your cat. Retrieved 8/20/2020 <https://www.aaha.org/aaha-guidelines/diabetes-management/client-education/>

VCA Hospitals Diabetes Mellitus - Insulin Treatment in Dogs. Retrieved 8/20/2020. <https://vcahospitals.com/know-your-pet/diabetes-mellitus-insulin-treatment-in-dogs>

VCA Hospitals Giving Insulin to Cats. Retrieved 8/20/2020. <https://vcahospitals.com/know-your-pet/giving-injections-to-cats>

Manufactured for:

TRIVIDIA
HEALTH

FORT LAUDERDALE, FL 33309 U.S.A.

NICO-4559 © 08/2020 Trividia Health, Inc. Healthy Tracks for Pets is a trademark of Trividia Health, Inc.